



2,685 SF Freestanding Restaurant w/ Drive-Thru

DEMOGRAPHICS

	1 mile	3 miles	5 miles
Estimated Population	8,446	49,771	81,245
Avg. Household Income	\$98,200	\$136,238	\$131,475

- Freestanding second generation restaurant space with drive-thru and outdoor patio available for lease
- Great visibility and highway signage
- Ample parking and access
- 291 Highway carries over 30,800 cars per day
- Located in one of the fastest growing areas in greater Kansas City with over one million square feet of traffic generators at this intersection including JC Penney, Kohl's, Home Depot, Walmart Supercenter, Super Target, Bed Bath & Beyond, Best Buy, Sprouts, and many others



CLICK HERE TO VIEW MORE
LISTING INFORMATION

For More Information Contact:

Exclusive Agents

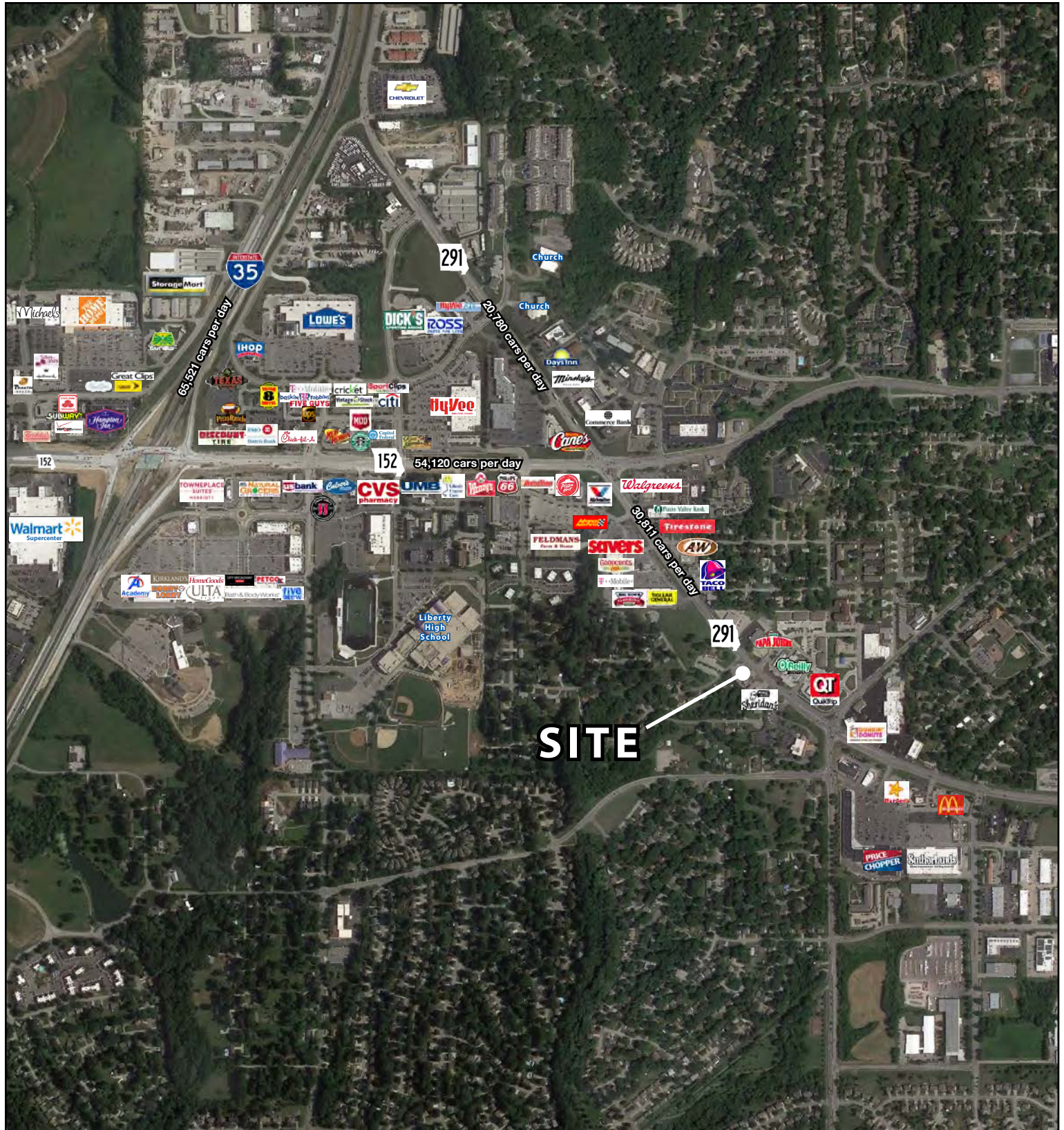
ZACH ALBRECHT | 816.412.7379 | zalbrecht@blockandco.com

DAVID BLOCK | 816.412.7400 | dblock@blockandco.com

PHOTOS

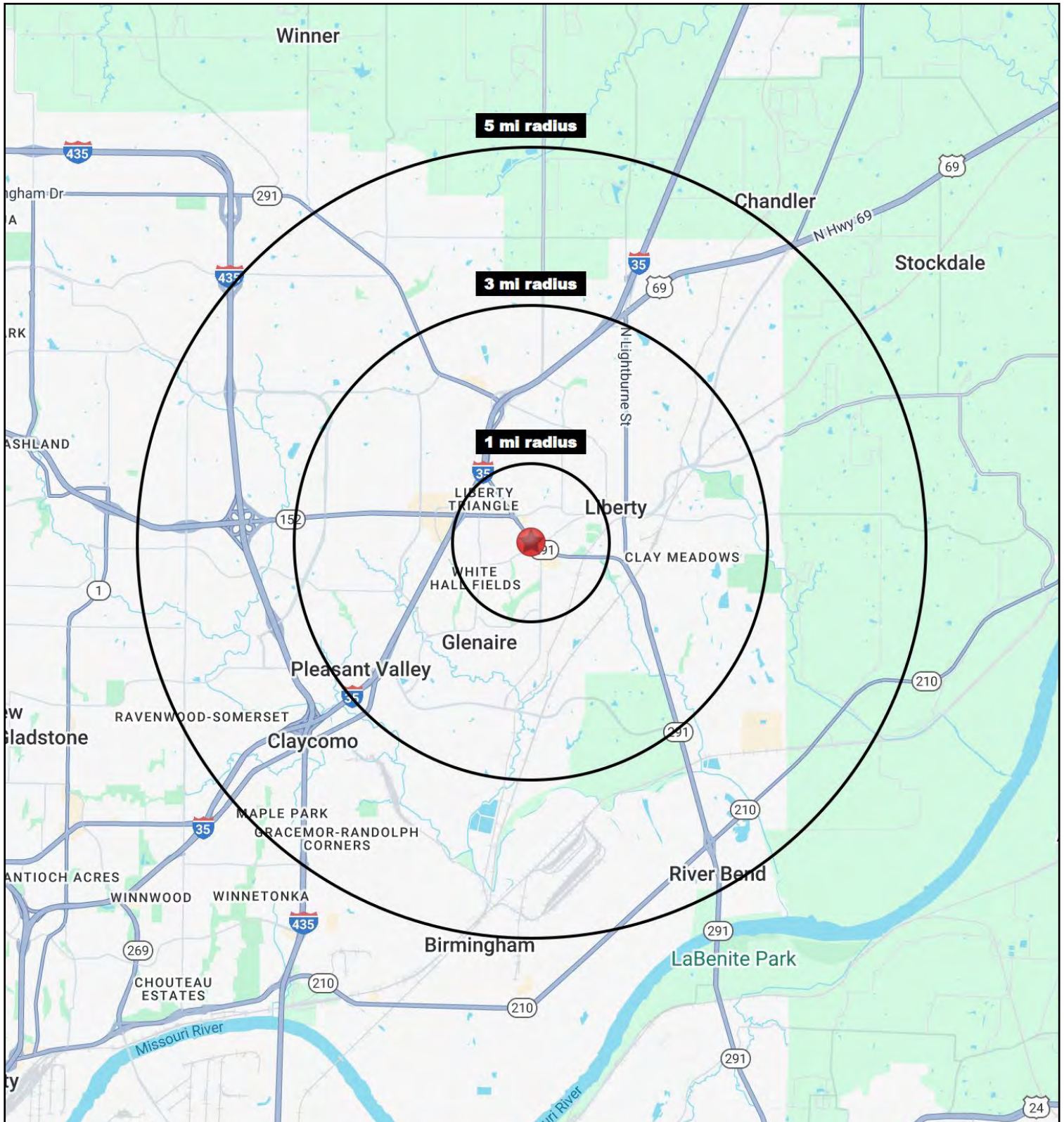


AERIAL



Freestanding Restaurant w/Drive-Thru

600 S. 291 Highway, Liberty, Missouri





Freestanding Restaurant w/Drive-Thru

600 S. 291 Highway, Liberty, Missouri

600 S. 291 Highway Liberty, MO 64068	1 mi radius	3 mi radius	5 mi radius
Population			
2024 Estimated Population	8,446	49,771	81,245
2029 Projected Population	8,860	52,274	85,453
2020 Census Population	8,176	48,742	79,030
2010 Census Population	7,893	42,959	66,918
Projected Annual Growth 2024 to 2029	1.0%	1.0%	1.0%
Historical Annual Growth 2010 to 2024	0.5%	1.1%	1.5%
2024 Median Age	40.0	38.3	37.4
Households			
2024 Estimated Households	3,502	19,115	30,892
2029 Projected Households	3,722	20,392	33,014
2020 Census Households	3,322	17,977	29,208
2010 Census Households	3,128	15,503	24,410
Projected Annual Growth 2024 to 2029	1.3%	1.3%	1.4%
Historical Annual Growth 2010 to 2024	0.9%	1.7%	1.9%
Race and Ethnicity			
2024 Estimated White	86.3%	84.5%	83.1%
2024 Estimated Black or African American	5.1%	6.2%	6.6%
2024 Estimated Asian or Pacific Islander	1.2%	2.4%	2.6%
2024 Estimated American Indian or Native Alaskan	0.4%	0.3%	0.3%
2024 Estimated Other Races	7.1%	6.6%	7.3%
2024 Estimated Hispanic	6.6%	6.0%	6.8%
Income			
2024 Estimated Average Household Income	\$98,200	\$136,238	\$131,475
2024 Estimated Median Household Income	\$81,955	\$107,401	\$105,726
2024 Estimated Per Capita Income	\$40,766	\$52,446	\$50,068
Education (Age 25+)			
2024 Estimated Elementary (Grade Level 0 to 8)	1.8%	2.1%	1.9%
2024 Estimated Some High School (Grade Level 9 to 11)	1.2%	2.2%	2.7%
2024 Estimated High School Graduate	22.2%	23.1%	23.7%
2024 Estimated Some College	20.6%	20.4%	21.5%
2024 Estimated Associates Degree Only	12.1%	9.4%	9.5%
2024 Estimated Bachelors Degree Only	27.8%	28.2%	26.6%
2024 Estimated Graduate Degree	14.3%	14.6%	14.1%
Business			
2024 Estimated Total Businesses	608	1,783	2,258
2024 Estimated Total Employees	5,162	16,987	21,491
2024 Estimated Employee Population per Business	8.5	9.5	9.5
2024 Estimated Residential Population per Business	13.9	27.9	36.0

©2024. Sites USA. Chandler, Arizona. 480-491-1112 Demographic Source: Applied Geographic Solutions 5/2024. TIGER Geographv - RS1